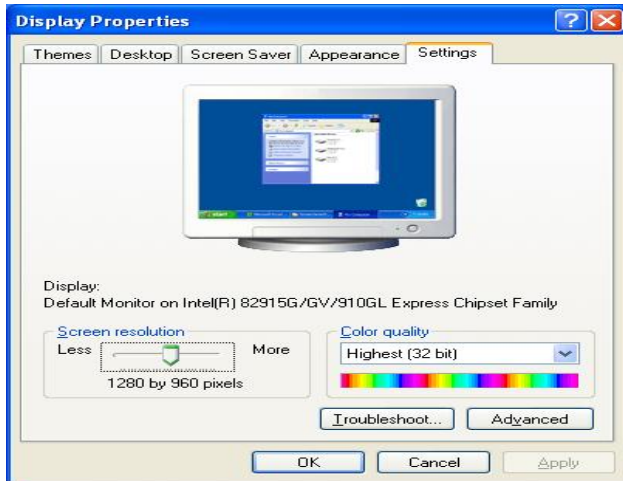


A. Monitor Setting

1. Right-click on the desktop. Select “Properties” and Change “Color Quality” to Highest (32bit).

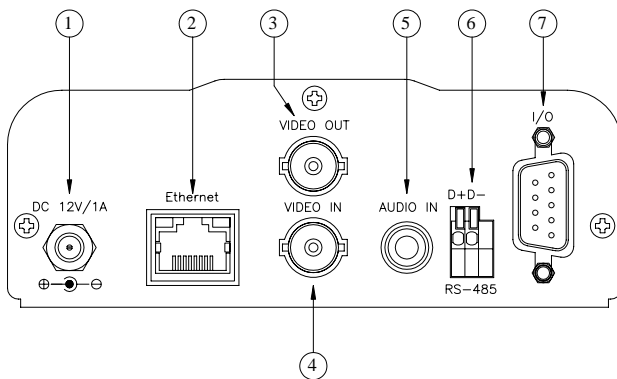


B. Hardware Installation

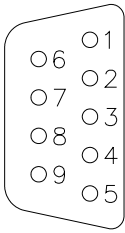
1. Connect a power adapter and connect Video Server to PC or network with Ethernet cable



2. Front plane assignment



1. Power Supply (DC 12V)
2. Ethernet (RJ-45)
3. VIDEO OUT BNC JACK
4. VIDEO IN BNC JACK
5. AUDIO IN RCA JACK
6. RS-485 / PTZ header.
7. GPIO I/O



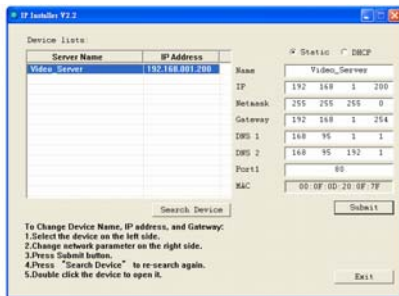
- | | | |
|----------|-----------|-----------|
| 1.12V | 4.X | 7.OUTPUT2 |
| 2.ALARM1 | 5.GND | 8.OUTPUT3 |
| 3.ALARM2 | 6.OUTPUT1 | 9.OUTPUT4 |

C. IP Assignment

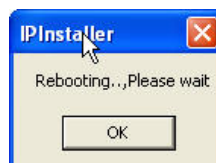
1. Use “IP Installer” to assign an IP address of Video Server.
The IP Installer software is in the attached CD.
2. IP Installer supports two languages.
 - a. IPInstallerCht.exe : Chinese Version
 - b. IPInstallerEng.exe : English Version
3. OS: Windows XP SP2 or above. If the following “Windows Security Alert” popup, please click “Unblock”.



4. The IP Installer configuration is as follows (Default IP: 192.168.1.200).



5. IP Installer will search all IP devices connected on LAN. The user can click “Search Device” to search again.
6. Click one of Video Server listed on the left side of IP Installer, then the network configuration of that Video Server will be listed on the right side. If parameters changed, click on “Submit”. Then, the network configuration will be changed.



Just click “OK” to reboot Video Server.

7. Please make sure the subnet of IP address of PC and Video Server is the same.

The same Subnet:

Video Server IP address: 192.168.1.200

PC IP address: 192.168.1.100

Different Subnets:

Video Server IP address: 192.168.2.200

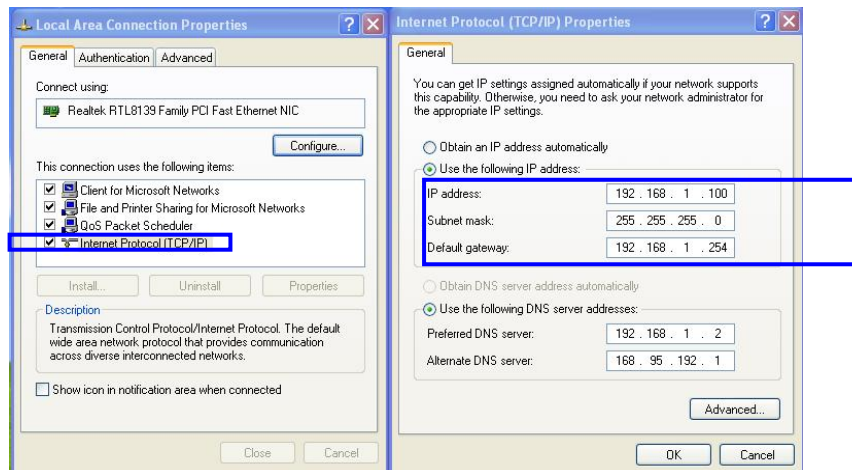
PC IP address: 192.168.1.100

Change PC IP address:

Control Panel→Network Connections→Local Area Connection

Properties→Internet Protocol (TCP/IP) →Properties

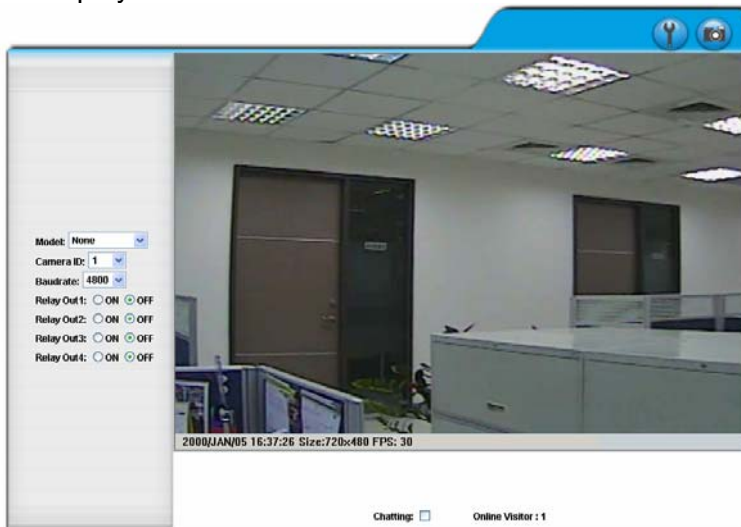
Please make sure your Video Server and PC have the same Subnet. If not, please change Video Server IP subnet or PC IP subnet accordingly.



8. A quick way to access remote monitoring is to left-click the mouse twice on a selected Video Server listed on “Device list” of IP Installer. An IE browser will be opened.
9. Then, please key in the default “User name: admin”, and “password: admin” in the following message box.



10. If the user name and password are input correctly, the following web page will be displayed.



D. Factory Default

1. If the user name, password, and IP address are lost, please follow the following instructions.
2. Unplug the power adapter first. Then, press the following button in the back of Video Server.



3. Plug the power adapter and do not release the button during the IP Camera booting.
4. It will take around 30 seconds to boot the Video Server.
5. Release the button after the Video Server finishes booting.
6. Reconnect the Video Server with the default IP address (<http://192.168.1.200>), user name (admin), and password (admin).

E. SD card Compatibility List

SanDisk 128M	Tracend 128M 80X
SanDisk 256M	Tracend 256M 80X
SanDisk 512M	Tracend 512M 80X
SanDisk 1G	Tracend 1G 80X
SanDisk 2G	Tracend 2G 80X
SanDisk 4G	Tracend 4G 80X