

HTC-11 SERIES

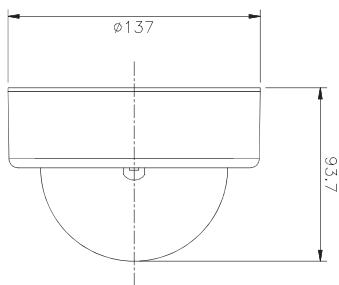
Main Features

- IR Distance: 12M
- Super high Res up to 540 TVL
- Vandalproof housing
- Burglarproof screw
- Weatherproof: IP66
- Mechanical ICR
- Day/Night Function
- Built-in Aspherical D/N IR Lens

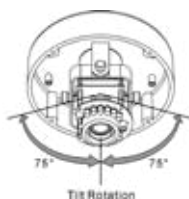
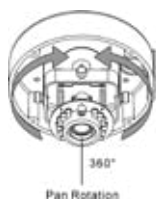


Interface

Accessories



3-Axis Rotation



(optional)

Specifications

ITEM	HTC-11B-IR		HTC-11I-IR	
PICK UP DEVICE	1/3" CCD Image Sensor			
SYSTEM	NTSC	PAL	NTSC	PAL
PICTURE ELEMENTS H*V	510 * 492	500 * 582	768 * 494	752 * 582
H. SYNC. FREQUENCY	15.734 KHz	15.625 KHz	15.734 KHz	15.625 KHz
V. SYNC. FREQUENCY	59.94Hz	50Hz	59.94Hz	50Hz
HORIZONTAL RESOLUTION	420 TV Lines		540TV Lines	
SCANNING SYSTEM	2:1 Interlace			
SENSITIVITY	0 Lux When IR on			
SYNCHRONIZATION	Internal/DC type , Line Lock /AC type Only,			
S/N RATIO	More Than 48 dB (AGC Off)			
BACK LIGHT COMPENSATION	ON/OFF Switchable			
ELECTRONIC SHUTTER	ON/OFF Switchable, Auto Range 1/50(1/60)Up to 1/100,000 sec			
GAIN CONTROL	Auto			
GAMMA	0.45			
LENS	3.7-12mm Auto IRIS, Mechanism IR Cut Filter, Day & Night Lens			
LED	12 Units 850nm Infrared LED, 10,000hrs			

ITEM	HTC-11B-IR	HTC-11I-IR
IR DISTANCE	12M	
DAY/NIGHT ON	>5 Lux color; <3 Lux B/W	
IR CUT FILTER CHANGE	Sync with the IR	
IR ON	<3 Lux	
VIDEO OUTPUT	1 Vpp, 75 Ohms	
WEATHER PROOF IP RATING	IP66	
POWER SUPPLY	DC 12V or AC 24V	
POWER CONSUMPTION	270/300mA at DC12V or 5W at AC24V	
DIMENSIONS (φ*H)	φ 137 x 93.7 mm	
WEIGHT	790g	
STORAGE TEMPERATURE	-30 to + 60 °C	
OPERATING TEMPERATURE	-10 to + 45 °C	

SPECIFICATIONS ARE SUBJECT TO CHANGE WITHOUT NOTICE

Model	Med-res.	Hi-res.	Resolution (TV Lines)	Sensitivity (F1.2) Lux	IR
HTC-11B/3.6	O		420	0.05	N/A
HTC-11B/3.7-12	O		420	0.05	N/A
HTC-11I/3.6		O	540	0.1	N/A
HTC-11I/3.7-12		O	540	0.1	N/A
HTC-11B/3.7-12/IR	O		420	0.05	O
HTC-11I/3.7-12/IR		O	540	0.1	O